

Hard as stone,
warm as wood

Q - Stone

CERAMIC COMPOSITE

Q-Stone featuring Nadura® has an extremely durable ceramic composite surface based on recycled wood fibers. With its patented solid surface, Nadura provides wear and impact resistance that is superior to traditional floors. Robust and everlasting, these floors are made to withstand daily to extreme situations and to provide long-lasting beautiful appearance.

www.wikinggulve.dk

LOCKING SYSTEMS

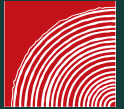


FLOORING CLASSIFICATIONS (EN ISO 10874)

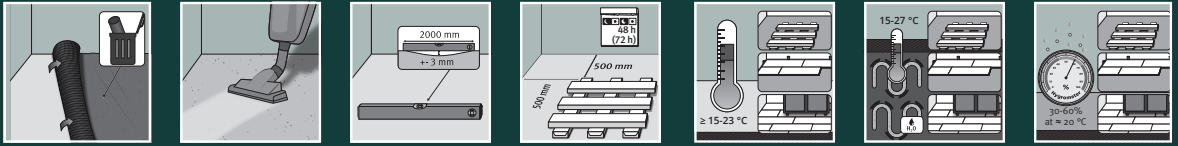


DOMESTIC HEAVY

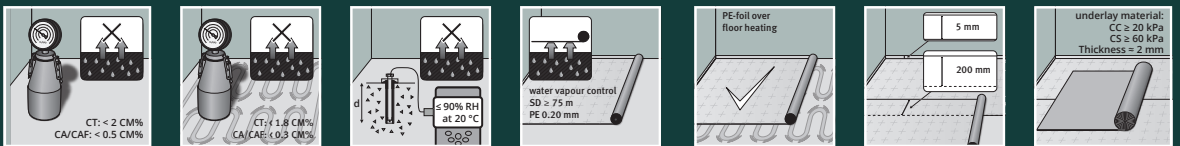
COMMERCIAL VERY HEAVY



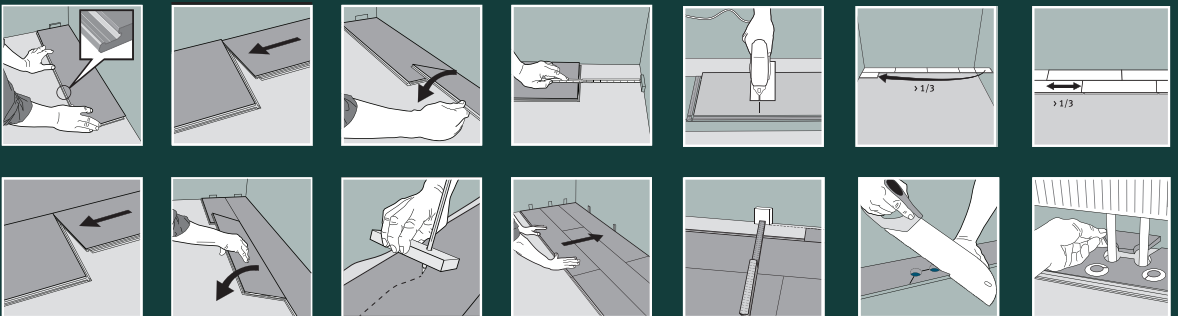
1. INSTALLATION PREPARATIONS



2. SUBFLOOR PREPARATIONS



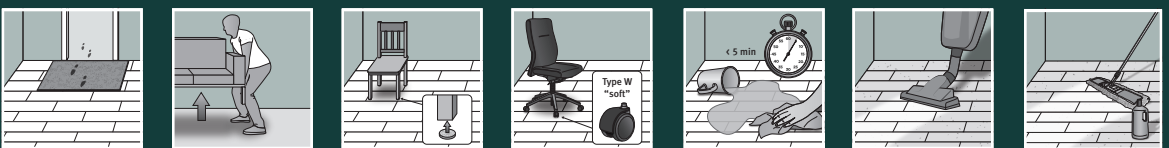
3. FLOOR INSTALLATION



4. DISMANTLING



5. CLEANING & MAINTENANCE



IMPORTANT INFORMATION

- Packages must be acclimated a minimum of 24 to 48 hours prior to installation in the room where the installation will take place.
- In rooms larger than 12 x 18 m (225 m²), the flooring must be installed in smaller sections with expansion joints.
- The distance to walls and other permanent pieces of construction elements (such as pillars and kitchen islands) should be approximately 1,5 mm per meter of the length and width of the floor (width 10 m = 15 mm expansion gap).
- Never install very heavy pieces of furniture such as kitchen islands/cabinets on top of the flooring.
- The indoor climate should have a temperature between 15-23°C and relative air humidity between 30-60% (according to Swedish Standards Institute).
- Always follow the floor manufacturers requirements and specifications regarding subfloor preparation.

For more detailed floor installation instructions, please visit: www.wikinggulve.dk